

WEEKLY BULLETIN ON OUTBREAKS AND OTHER EMERGENCIES

Week 8: 19- 25 February 2024

Data as reported by: 17:00; 25 February 2024



World Health
Organization

African Region

Emergency Preparedness and Response

2

New events

121

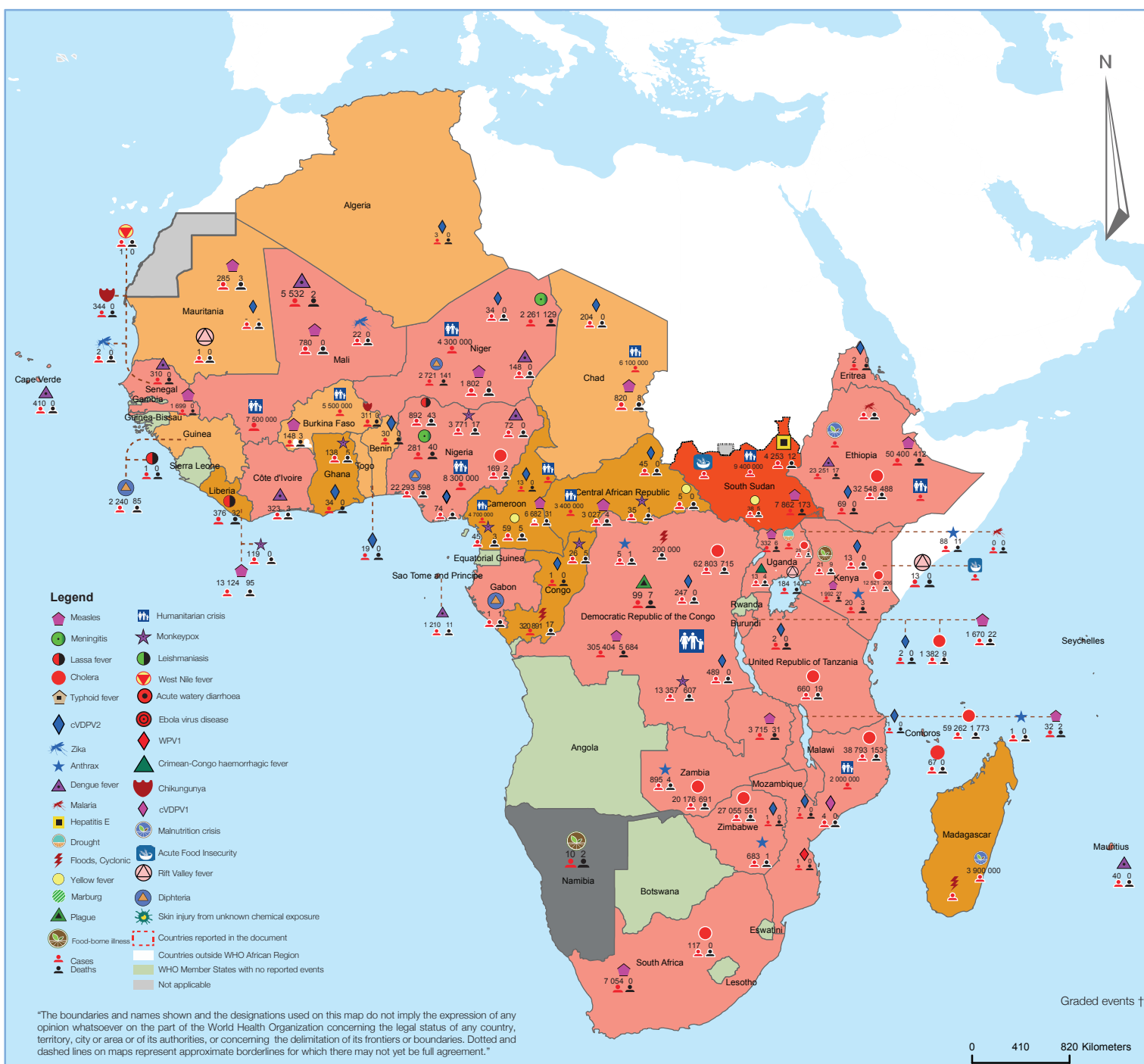
Ongoing events

102

Outbreaks

21

Humanitarian crises



"The boundaries and names shown and the designations used on this map do not imply the expression of any opinion whatsoever on the part of the World Health Organization concerning the legal status of any country, territory, city or area or of its authorities, or concerning the delimitation of its frontiers or boundaries. Dotted and dashed lines on maps represent approximate borderlines for which there may not yet be full agreement."

5

Grade 3 events

4

Grade 2 events

0

Grade 1 events

1

Protracted 3 events

5

Protracted 2 events

0

Protracted 1 events

44

Ungraded events

Overview

Contents

1 Overview

2 - 7 Ongoing events

8 IDSR Report

9 All events currently being monitored

This Weekly Bulletin focuses on public health emergencies occurring in the WHO African region. This week's articles cover:

- [Measles in Mauritania](#)
- [Cholera in the United Republic of Tanzania](#)
- [Humanitarian Crisis in Mali](#)

For each of these events, a brief description, followed by public health measures implemented and an interpretation of the situation is provided.

A table is provided at the end of the bulletin with information on all new and ongoing public health events currently being monitored in the region, as well as recent events that have been controlled and closed.

Major issues and challenges include:

- Mauritania is currently grappling with a measles outbreak that has escalated since the beginning of 2024. The observed increase in cases is concerning as it highlights a rapid spread across the nation. The response to the measles outbreak faces several challenges, including a delayed measles follow-up campaign expected since 2023 and a low national vaccine coverage. The functionality of isolation units for suspected cases in health centers is suboptimal, and there is a lack of sensitization to vaccination in remote areas and among special populations. Additionally, the country's multiple border crossings complicate control efforts, and there is insufficient data reporting from some health facilities.
- The challenges in addressing the current cholera outbreak in Tanzania include insufficient funds for response activities, limitations in WASH facilities, poor road infrastructure hindering access to affected areas, and inadequate supply of clean water. Additionally, low latrine coverage and nomadic communities contribute to water contamination, while limited engagement of community leaders affects awareness and prevention efforts. There's also a lack of knowledge about water treatment methods among affected communities. Addressing these challenges requires increased funding, infrastructure development, community engagement, and education on cholera prevention measures.

Mauritania

Measles

462	1	0.2%
Cases	Deaths	CFR

EVENT DESCRIPTION

Since the beginning of 2024, Mauritania has experienced a significant resurgence in measles cases. From 1 January to 18 February 2024 (week 1 to week 7), the country reported 693 measles suspected cases, including 462 confirmed cases (94 laboratory-confirmed and 368 confirmed by epidemiological link), and one death. This marks a significant increase from the 526 suspected cases and 440 confirmed cases reported up to 11 February 2024. The reported cases between week 1 and week 7 of 2024 significantly exceed those reported during the same period in 2023, and this necessitates immediate and comprehensive response measures.

Three additional Moughataas (districts) – Atar, Nouadhibou, and Ould Naga– surpassed the epidemic threshold in week 7 of 2024, joining Zouerate and Birr Oumgrein, which crossed the threshold in the preceding week. This brings to 17 the total number of wilayas currently experiencing the outbreak.

Infants under one year of age have the highest attack rate of 45.7 per 100 000 inhabitants. The gender distribution is relatively balanced, with a slight predominance of cases among females (sex ratio F/M = 1.04). Of the 462 confirmed cases, 77.5% were not vaccinated against measles. Sporadic measles cases were first reported in week 20 of 2022.

Throughout 2023, several districts reported outbreaks, indicating a sustained transmission of measles within the population. Since the beginning of 2023 up to 18 February 2024, 45 (71.4%) out of the 63 Moughataas (districts) across Mauritania's 15 wilayas (regions) have reported confirmed cases of measles. Among these, 31 wilayas have surpassed the epidemic threshold, with 17 currently in an epidemic phase and 14 in a post-epidemic phase.

containment measures promptly.

- Efforts have been amplified to educate the public about the importance of measles vaccination, including door-to-door campaigns targeting families of suspected or confirmed cases.
- Targeted Vaccination Campaigns have been pivotal in controlling the outbreak, with 678 contacts and unvaccinated children around confirmed cases vaccinated. Special attention is given to regions with high caseloads like Assaba, Tagant, and Trarza.

SITUATION INTERPRETATION

The recurrence of measles cases and the comparison with the previous year's data provide valuable insights into the outbreak's dynamics. It emphasizes the need for continuous surveillance, timely reporting, and the implementation of effective control measures including reactive vaccination to curb the spread of the disease. The higher number of cases reported in the early weeks of 2024 compared to 2023 indicates that measles remains a significant public health threat in Mauritania, with increased transmission rates requiring more attention.

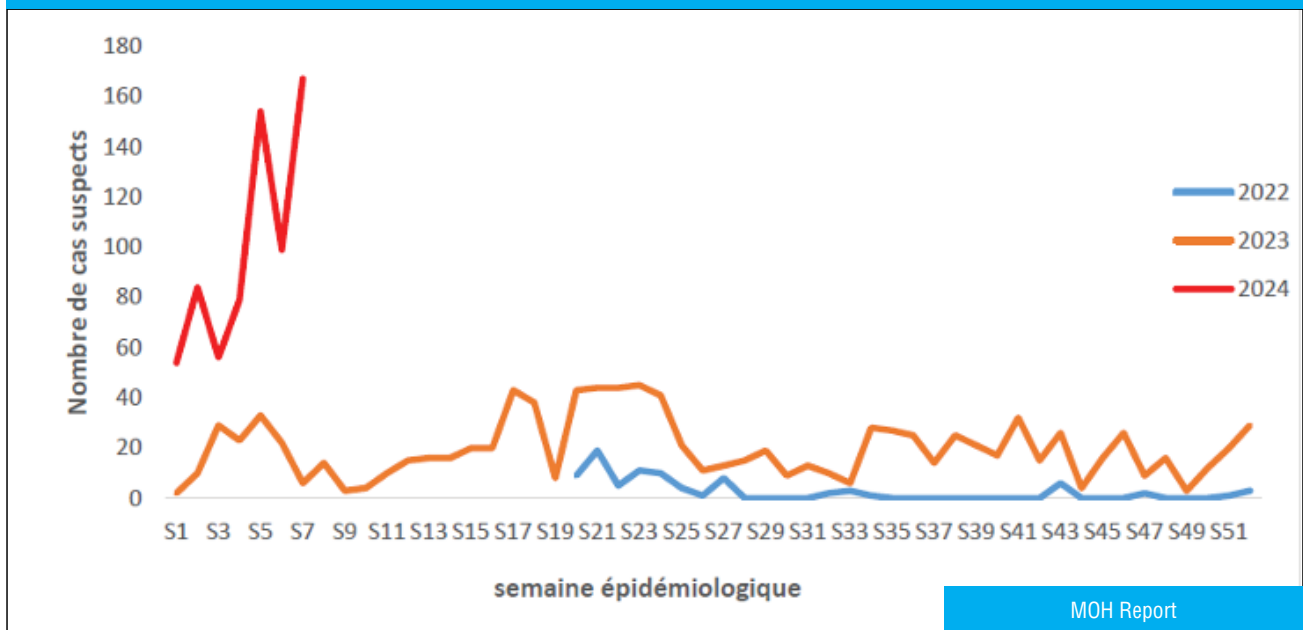
PUBLIC HEALTH ACTIONS

- The Mauritanian Ministry of Health, in coordination with the WHO and other stakeholders, has intensified its response to the measles outbreak. The Incident Management System measles coordination meetings occur twice weekly, ensuring agile and responsive decision-making.
- Enhanced surveillance in affected and at-risk areas, coupled with rigorous case investigations, helps in identifying cases early and implementing

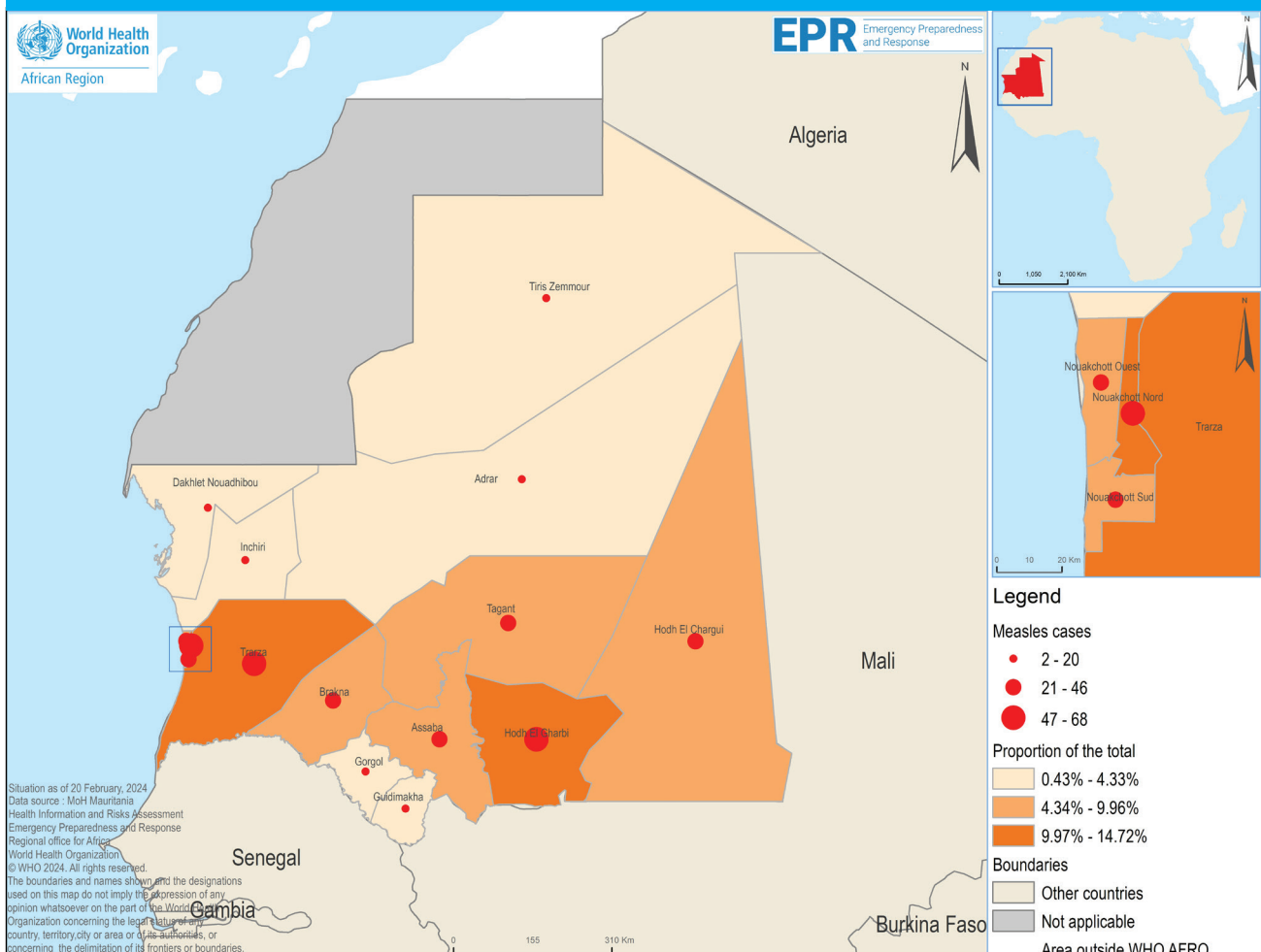
[Go to overview](#)

[Go to map of the outbreaks](#)

Weekly measles confirmed cases in Mauritania, Week 1, 2022 - Week 7, 2024



Distribution of cases of measles in Mauritania by Region, as of 20 February, 2024



United Republic of Tanzania

Cholera

EVENT DESCRIPTION

The ongoing cholera outbreak in Tanzania, which began in September 2023, persists. On 26 February 2024, 42 new cases and no deaths were reported across four regions: Mwanza (30 cases), Simiyu (6 cases), Shinyanga (4 cases), and Kagera (2 cases).

From 23 December 2023 to 26 February 2024, a cumulative total of 1 317 cholera cases, including 26 deaths (CFR 2.0%), were recorded across ten regions, namely Dodoma, Katavi, Kagera, Manyara, Morogoro, Mwanza, Simiyu, Singida, Shinyanga, and Tabora. The highest number of cases was reported in Mwanza (426 cases, 3 deaths), followed by Simiyu (376 cases, eight deaths), Shinyanga (202 cases, six deaths), Kagera (130 cases, six deaths), and Morogoro (50 cases, 1 death).

Females accounted for 41.4% (n=528) of all reported cases, with 31.0% (n=398) of cases falling within the 15 to 49 years age group.

Cumulatively, from 5 September 2023 when the outbreak began, to 26 February 2024, a total of 1 997 cholera cases, including 39 deaths (CFR: 2.0%), were reported across 16 regions of Tanzania Mainland, namely Mara, Arusha, Kilimanjaro, Kigoma, Kagera, Singida, Simiyu, Shinyanga, Tabora, Ruvuma, Mwanza, and Geita.

Mwanza remains the most affected region, with 425 cases and three deaths, followed by Simiyu (376 cases, eight deaths), Mara (252 cases, eight deaths), and Shinyanga (202 cases, 6 deaths).

A significant risk factor contributing to the persistent cholera outbreak in Tanzania is the inadequate WASH (Water, Sanitation, and Hygiene) infrastructure, exacerbated by disrupted water supply networks and the prohibitive cost of accessing safe water. This has led to considerable challenges in ensuring the availability, accessibility, and affordability of clean water, prompting individuals to resort to using untreated and contaminated water sources for drinking. Such practices greatly elevate the risk of cholera transmission.

1 997

Cases

39

Deaths

2.0%

CFR

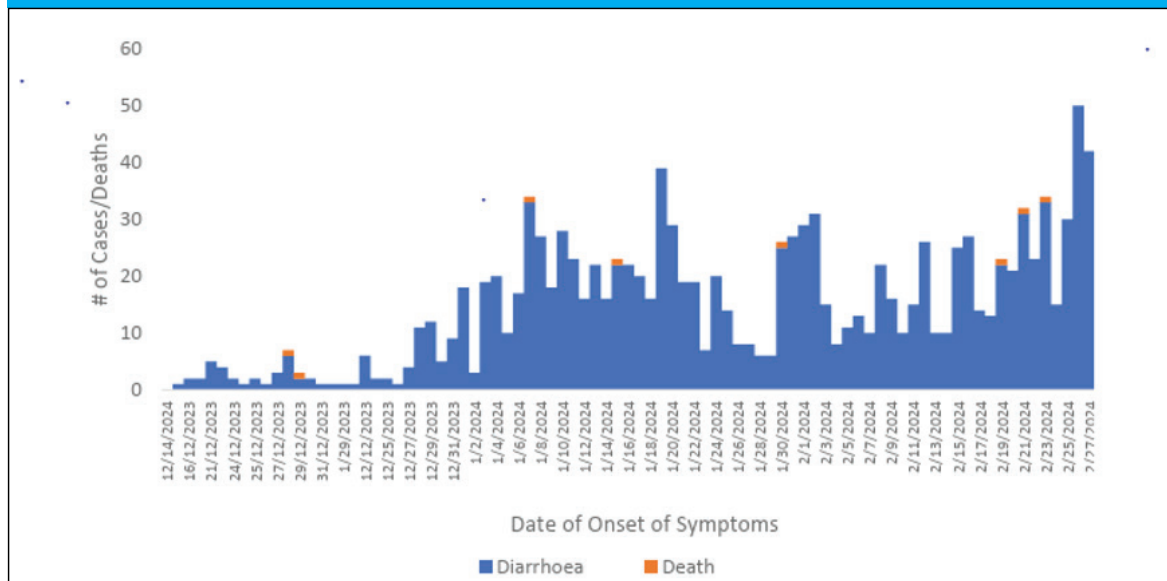
PUBLIC HEALTH ACTIONS

- ▶ The Ministry of Health is leading the coordination of response efforts in the affected regions. This includes organising regular coordination meetings at national, regional and council levels. In addition, information products about the current outbreak are shared regularly to inform the public and partners.
- ▶ Ongoing surveillance activities include mainly alert management and active case search in affected regions.
- ▶ Laboratory activities are ongoing including the testing of suspected cases and providing cholera testing kits in affected regions.
- ▶ The Ministry of Health continues to supply cholera items in affected regions. In Kagera region, drugs such as doxycycline, oral rehydration salts, ringer's lactate, normal saline and personal protective equipment, among others were supplied to Goziba responding teams.
- ▶ WASH activities are ongoing, encompassing the sensitization on cholera prevention, training of community health workers on cholera prevention and control measures, distribution of aqua tabs, and inspection of premises.

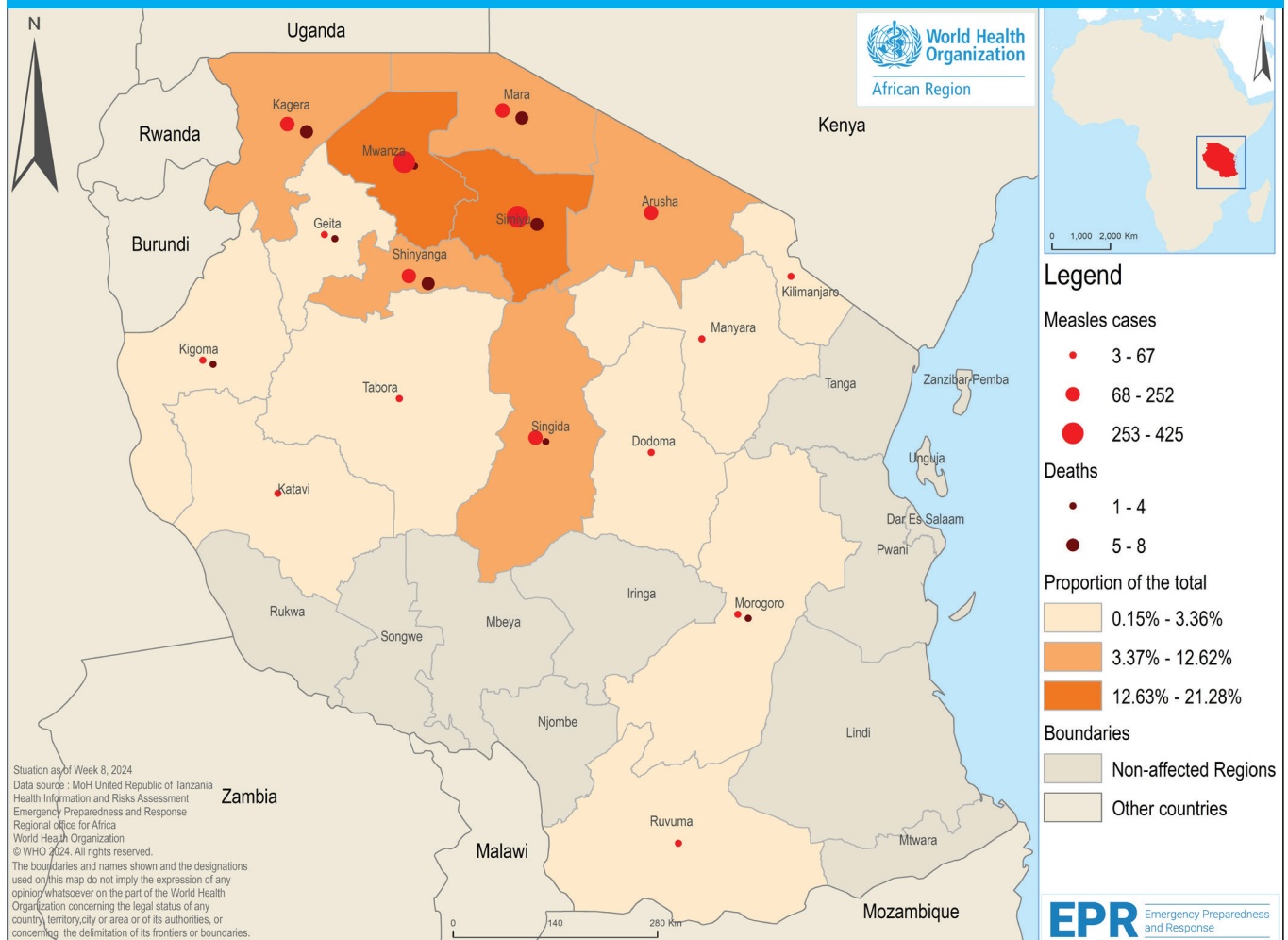
SITUATION INTERPRETATION

Seven months since the outbreak of cholera started in Tanzania, the country continues to report new cases. To effectively control the current cholera outbreak, it is imperative to strengthen resource mobilisation to support response interventions adequately. Ensuring the availability of necessary resources and commodities is essential for swift and effective response efforts. Moreover, the active involvement of political and community leaders in educating the community about the importance of constructing and using latrines for cholera prevention is crucial. Additionally, surveillance measures should be intensified to identify and address sources of contamination, enabling targeted interventions to mitigate the spread of the disease. These recommendations, if implemented effectively, have the potential to enhance control measures and curb the current outbreak significantly.

Trend of Cholera cases reported in Tanzania from 5 September 2023 to 27 February 2024



Distribution of cases and deaths of measles in Tanzania by Region, as of 20 February, 2024



Mali

Complex Humanitarian Situation

EVENT DESCRIPTION

The humanitarian crisis in Mali continues to be characterized by a significant increase in the number of displaced people across the country. There is an ongoing worrying security situation from week 45 (ending 12 November 2023) to week 7 (ending 2 February 2024) in the regions of Gao, Kidal and Ménaka inciting attacks on the health system that resulted in one recorded death.

The humanitarian situation in November 2023 was marked by an increase in the number of internally displaced persons (IDPs) in Kidal and Ménaka regions and the persistence of clashes, robberies, kidnappings, and theft in the Gao region. Tension between the Mali forces and armed groups has led to a displacement of populations and health personnel in the Kidal region.

The number of IDPs increased from 375 539 in April 2023 to 391 961 in September 2023 (4.0% increase). A significant increase was noted in Kidal (32.8%) and Ménaka (20%). In Kidal, IDPs increased from 32 394 on 1 November to 56 980 on 15 Nov 15 (74.0% increase) with five health centers closed due to tensions. In Ménaka, 673 households (approximately 3 464 people) registered as IDPs according to the Travel Tracking Matrix for September, an increase of 4.0%, highlighting a worrying trend of increasing displacement, particularly in these two districts. This tension also led to the closure of five community health centres including two in of Kidal Health District, and the community health centres of d'Aguel hoc in Tessalit Health District and the community health centres of Tin-Essako in the Tin-Essako district. The security situation remains worrying in the three regions with series of clashes, robberies, kidnappings, and theft in the Gao region.

Additionally, the humanitarian situation in Mali has been exacerbated by several ongoing outbreaks of dengue, zika, meningitis, malaria and rabies. Although, measles has recorded a decreasing number of cases, the continued occurrence of deaths associated with measles remain concerning.

PUBLIC HEALTH ACTIONS

- Coordination has been strengthened through technical assistance provided to develop a comprehensive Situation Report and enhance coordination across various stakeholders.
- Essential Supplies like deliveries of medicines, medical supplies, equipment, and laboratory equipment have been distributed to support the health needs of IDPs.
- WHO is finalising an update on Health Services Attack Monitoring System platform for 2023.
- Strengthened overall response through improved humanitarian access conditions and COVID-19 Integration into routine activities.
- Risk Assessment and Communication in addition to risk communication campaigns through press conferences, radio, and TV messages are raising public awareness.
- Improved case detection, reporting and notification of haemorrhagic fever cases, including dengue.
- Campaigns are underway for polio in the Southern block, measles scheduled for January 2024, and rabies to extend dog vaccination programs to additional at-risk regions.
- Targeted vector control campaigns are ongoing in all districts experiencing dengue epidemics to control mosquito populations.
- Financial resources are being directed towards field operations of rapid intervention teams and vector control activities.

SITUATION INTERPRETATION

Mali faces a complex humanitarian situation with interconnected issues requiring a comprehensive response that addresses security concerns, public health needs, and the well-being of displaced populations. The complex situation in Mali requires a comprehensive and coordinated effort from various stakeholders to mobilizing resources, ensure the safety of healthcare workers, and implement effective public health measures that are crucial for improving the impact of the complex humanitarian situation.



Snapshots of the complex Humanitarian Situation in Mali, as of January 2024



Source: UNICEF

All events currently being monitored by WHO AFRO

Country	Event	Grade	Date notified to WCO	Start of reporting period	End of reporting period	Total cases	Cases Confirmed	Deaths	CFR
New Events									
Madagascar	Floods	Ungraded	2/26/2024	2/5/2024	2/18/2024	-	-	-	
Since weeks 6 and 7, 2024 heavy rainfall has triggered flooding in the central and northeastern parts of Madagascar. This has resulted in population displacements and the loss of homes and infrastructure, including roads, bridges, agriculture, health facilities, water, sanitation, and hygiene infrastructure. The three regions affected by the situation are Atsinanana, Analanjirofo, and Analamanga									
Zimbabwe	Poliomyelitis (cVDPV2)	Grade 2	2/21/2024	2/22/2024	2/27/2024	3	3	0	0.0%
Zimbabwe is currently responding to an outbreak of a circulating Vaccine Derived Poliovirus type 2 (cVDPV2). The cVDPV2 outbreak was first detected through Environmental Surveillance (ES) in October 2023 in Harare City. In total, there are three human cases of vaccine deprived polio type 2 (cVDPV2). The first human case of cVDPV was detected in Sanyati district through Acute Flaccid Paralysis (AFP) surveillance; two cVDPV2 isolates were detected from healthy children whose samples were collected as part of the initial detailed outbreak investigation. The country is now responding through strengthened routine immunization, enhanced surveillance and nOPV2 vaccination campaigns. First round of the nOPV2 campaign was conducted from 20 to 23 February 2024.									
Ongoing Events									
Algeria	Poliomyelitis (cVDPV2)	Grade 2	7/14/2022	4/11/2022	1/10/2024	3	3	-	-
According to Global Polio Eradication Initiative, no case of circulating vaccine-derived poliovirus type 2 (cVDPV2) was reported this week. There were three cases reported in 2022.									
Benin	Poliomyelitis (cVDPV2)	Grade 2	8/8/2019	8/24/2019	1/31/2024	30	30		0.0%
There have been three cases reported in 2023. There are 13 cases reported in 2022. Six cases were reported in 2021 and 2020, and eight in 2019.									
Burkina Faso	Humanitarian crisis (Sahel Region)	Grade 2	1/1/2019	1/1/2019	2/13/2024	5,500,000	5,500,000	-	-
Since 2015, the security situation in the Sahel and Eastern Burkina Faso has gradually deteriorated due to attacks by armed groups. Access to healthcare services remains a major challenge for the affected population. As of February 2024, 5.5 million People needed humanitarian assistance, 3.2 million of which are children and over 2.06 million IDPs registered and 5478 schools closed. The situation remains fluid.									
Burkina Faso	Chikungunya	Ungraded	9/6/2023	9/19/2023	1/7/2024	311	311		0.0%
On 6 September 2023, the reference laboratory for viral hemorrhagic fevers confirmed a case of chikungunya in a patient from the Pouytenga health district whose sample was collected as part of sentinel surveillance for dengue and other arboviruses. As of 7 January 2024, 311 confirmed cases and no deaths were reported from six health districts: Pouytenga (274, 88%), Ouagadougou (23), Zorgho (8), Koudougou (4), and Bobo Dioulasso (2). No new confirmed cases were reported during week 1 of 2024.									
Burkina Faso	Measles	Ungraded	2/6/2024	1/14/2024	2/2/2024	642	148	3	0.5%
Burkina Faso is experiencing an increase in measles cases. Between week 1 and week 04 of 2024, a total of 642 suspected measles cases, resulting in 2 deaths, have been recorded. This rise indicates a growing trend in 2024 compared to previous years during the same period.									
Burundi	Cholera	Grade 3	1/1/2023	12/14/2022	1/7/2024	1.382	175	9	0.7%
The ongoing cholera outbreak was officially declared on 1 January 2023. Cumulatively, a total of 1 382 cases with nine deaths have been reported as of 7 January 2024									
Burundi	Measles	Ungraded	2/15/2024	1/1/2023	2/12/2024	1670	1 670	22	1.3%
On 14 February 2024, Burundi's Ministry of Health reported a measles outbreak, with 20 of the country's 49 health districts experiencing active outbreaks. These districts were identified as having unvaccinated children in the 2022 National Vaccination Coverage Survey. The epidemic curve indicates a steady increase in cases since May 2023. In 2023, there were 1670 confirmed cases resulting in 22 deaths, representing a case fatality rate of 1.3%. Among the confirmed cases, 55% were aged 6-59 months, and 82% were under 15 years old. From 1 January to 12 February 2024, 34 deaths were reported in five health districts.									
Burundi	Poliomyelitis (cVDPV2)	Grade 2	3/17/2023	1/1/2022	1/10/2024	2	2		0.0%
No cVDPV2 case was reported this week. There is one case reported in 2023 and one in 2022.									
Cameroon	Humanitarian crisis (North-West & South-West)	Protracted 2	10/1/2016	6/27/2018	2/13/2024	4,700,000	4,700,000	-	-
In the North-West and South-West regions, the unstable security situation and persistent violence are exacerbating humanitarian needs. Affected people continue to flee their homes to neighbouring villages and communities. By February 2024, the following observations were made: 4.7M people in need, 2.7M people targetted, 1M IDPs, 658k Returnees and 485K Refugees and Asylum Seekers.									
Cameroon	Humanitarian crisis (Sahel Region)	Grade 2	12/31/2013	6/27/2017	2/13/2024	-	-	-	-

The Far North region of Cameroon is still facing humanitarian crisis. The region situated at the border area with Nigeria and Chad, as well as the Lake Chad area, remain the most affected by the armed conflict. Between August and September this year, nearly 6 000 newly displaced people were registered in the Mokolo district following repeated attacks by non-state armed groups. More than 2 200 new asylum seekers/refugees were registered for the same period at the Gourenouel transit site, in Mokolo district of Mayo-Tsanaga department.

Cameroon	Measles	Ungraded	4/2/2019	1/1/2023	12/3/2023	6.682	6.535	31	0.5%
----------	---------	----------	----------	----------	-----------	-------	-------	----	------

From week 1 through week 48 (ending 3 December 2023), 6 535 confirmed measles cases have been reported in Cameroon, including 476 IgM+ and 6 059 epidemiologically linked. At least 31 related deaths (CFR 0.5%) have been reported in 2023.

Cameroon	Mpox	Protracted 2	2/24/2022	1/1/2022	11/30/2023	45	45	3	6.7%
----------	------	--------------	-----------	----------	------------	----	----	---	------

From 1 January to 30 November 2023, 113 suspected cases of Mpox, including 27 laboratory-confirmed and no deaths have been reported. In 2022, 18 confirmed cases and three deaths were reported in the country.

Cameroon	Poliomyelitis (cVDPV2)	Grade 2	5/23/2019	1/1/2020	12/6/2023	13	13		0.0%
----------	------------------------	---------	-----------	----------	-----------	----	----	--	------

No cVDPV2 cases were reported this week. There were three cases reported in 2022, three others reported in 2021, and seven cases reported in 2020.

Cameroon	Yellow Fever	Ungraded	11/20/2023	1/23/2023	12/24/2023	59	30	5	8.5%
----------	--------------	----------	------------	-----------	------------	----	----	---	------

Between weeks 35 and 45 of 2023, Cameroon recorded eight PCR-positive cases of yellow fever. This is in addition to 51 cases that tested positive by plaque reduction neutralization test (PRNT) between weeks 4 and 45 of 2023. Of the 59 PCR- and PRNT-positive cases, 30 were classified as confirmed cases, including 19 reportedly unvaccinated against yellow fever. These cases were reported from 48 health districts in the Central, Littoral, South, West, East, North-West, South-West, North, Adamaoua and Far-North regions. Only two cases benefited from in-depth investigation with entomological investigation.

Cape Verde	Dengue	Grade 3	11/6/2023	11/6/2023	12/19/2023	410	193		1.2%
------------	--------	---------	-----------	-----------	------------	-----	-----	--	------

On 6 November 2023, the Ministry of Health Surveillance Service reported two confirmed cases of Dengue through Polymerase Chain Reaction (PCR) testing and one borderline case in the city of Praia, Santiago Island, Cabo Verde. The same day three more suspected cases were reported from the Central Hospital Dr. Agostinho Neto giving a total of six cases including two confirmed with zero death. As of 19 December 2023, a total of 410 suspected cases, including 193 confirmed cases and no deaths, were reported.

Central African Republic	Humanitarian crisis	Protracted 2	12/11/2013	12/11/2013	2/13/2024	2,800,000	2,800,000	-	-
--------------------------	---------------------	--------------	------------	------------	-----------	-----------	-----------	---	---

The Central African Republic has been facing a humanitarian crisis for more than a decade following military-political conflicts. In 2023, an estimated 2 million people were assisted and in 2024, 1.9 million people have been targeted. Of the country's population of 6.1 million inhabitants, more than half (3.4 million), need humanitarian assistance in 2024. More than 512 000 people are currently internally displaced, 2.5 million suffer from food insecurity, and 751 000 are CAR refugees.

Central African Republic	Measles	Ungraded	3/13/2022	1/1/2023	11/26/2023	3.027	1.145	4	0.1%
--------------------------	---------	----------	-----------	----------	------------	-------	-------	---	------

At the end of epi-week 47, 2023, the country recorded 3 027 suspected cases and 4 deaths. Since the start of 2023, 15 out of 35 health districts (43%) experienced measles outbreak.

Central African Republic	Mpox	Protracted 2	3/3/2022	3/4/2022	11/26/2023	35	35	1	2.9%
--------------------------	------	--------------	----------	----------	------------	----	----	---	------

From 4 March 2022 to 26 November 2023, 35 confirmed cases of Mpox and one death have been reported in the country. Since the start of 2023, the country has reported 18 laboratory-confirmed cases, including one death.

Central African Republic	Poliomyelitis (cVDPV2)	Grade 2	5/24/2019	5/24/2019	12/13/2023	45	45		0.0%
--------------------------	------------------------	---------	-----------	-----------	------------	----	----	--	------

A total of 14 cases have been reported in the country in 2023. In addition, six cases were reported in 2022. Although no new cases were reported in 2021, four cVDPV2 cases were reported in 2020 and 21 cases in 2019 from several outbreaks. The number of confirmed cases reported in 2023 was revised to 14 so far.

Central African Republic	Yellow Fever	Ungraded	6/12/2023	1/1/2023	11/26/2023	5	5		0.0%
--------------------------	--------------	----------	-----------	----------	------------	---	---	--	------

There is an ongoing yellow fever outbreak in the Central African Republic. In 2023, from week 1 through week 47 (ending 26 November), five confirmed cases of yellow fever were recorded for the following districts: Sangha-Mbaéré (1), Berbérati (1), Bambari (2), and Bossembélé (1). The number of the confirmed cases this year has been reviewed.

Chad	Humanitarian crisis (Sahel region)	Grade 2	2/11/2022	3/1/2016	11/12/2023	-	-	-	-
------	------------------------------------	---------	-----------	----------	------------	---	---	---	---

With the ongoing Sudanese crisis, over 570 000 Sudanese and Chadian people fled Darfur to converge to the eastern entry points of Chad. Chad is the most affected country by the crisis in Sudan as it hosts 49.6% of Sudanese refugees, with thousands of new arrivals every week. These refugees live in numerous formal and informal camps located in 11 health districts across four provinces (Ennedi East, Ouaddaï, Sila and Wadi Fira).

Chad	Measles	Ungraded	5/24/2018	1/1/2023	12/10/2023	10.552	820	8	0.1%
------	---------	----------	-----------	----------	------------	--------	-----	---	------

As of Week 49 of 2023 (ending 10 December), 10 552 suspected cases and eight measles-related deaths (CFR 0.1%) were reported in Chad. A total of 820 samples tested IgM positive for measles and 178 tested IgM+ for rubella.

Chad	Poliomyelitis (cVDPV2)	Grade 2	10/18/2019	9/9/2019	12/13/2023	204	204		0.0%
------	------------------------	---------	------------	----------	------------	-----	-----	--	------

One cVDPV2 case was reported this week, bringing the total number of cases this year to 45. This latest reported case had onset of paralysis on 15 September, from Salamat region of Chad, 44 cVDPV2 cases were reported in 2022, 106 cVDPV2 cases were reported in 2020 from three different outbreaks and nine others were reported in 2019.

Comoros	Cholera	Grade 3	2/2/2024	2/2/2024	2/17/2024	67		5	7.5%
---------	---------	---------	----------	----------	-----------	----	--	---	------

On 2 February 2024, the Ministry of Health of Comoros officially declared an outbreak of cholera in the country following a positive testing through rapid diagnostic test (RDT) of sample collected from suspected cases who travelled from Tanzania to Comoros in the same boat. As of 17 February 2024, a total of 67 cases including five deaths (CFR 7.5%) are reported.

Comoros	Rift Valley Fever	Ungraded	1/12/2024	1/12/2024	1/12/2024	471		9	1.9%
An unusual disease outbreak began in the Comoros around late October 2023. 471 suspected cases hospitalized distributed between Ngazidja and Moili, in nine health districts. Symptoms included flu-like illness and gastroenteritis; 2% had meningoenophalitis, epistaxis, and petechiae. 16 blood samples were taken from these cases for biological analyses and lab results ruled out dengue, Rift Valley fever, influenza, and COVID-19. Mohéli Island also reports cattle and goat deaths. As of January 5, 2024, four samples (3 cattle, 1 human) tested positive for past RVF infection but negative for IgM. Further investigation continue.									
Congo	Floods	Grade 2	1/1/2024	1/4/2024	1/7/2024	320.891	320.891	17	0.0%
This crisis is attributed to a consistent increase in rainfall over the last two months of 2023, which caused the Congo River's water level to rise by 30 cm. As of week 1 of 2023, an estimated 320 891 individuals were directly impacted by the floods. There have been 17 deaths reported across Likouala, Plateaux, Brazzaville, and Pointe-Noire, along with 6 people reported missing in Likouala and the Cuvette regions. A total of 361 villages and 36 neighborhoods experienced either complete or partial flooding with 2 292 hectares of farmland inundated. Residential structures have been severely affected, leading to widespread destruction of homes and the flooding of administrative buildings. Additionally, the flooding has contaminated local drinking water sources.									
Congo	Mpox	Protracted 2	5/23/2022	8/22/2023	11/27/2023	26	21	5	19.2%
From 22 August to 27 November 2023, 21 laboratory-confirmed cases of Mpox, 5 probable cases and 5 deaths were reported .									
Congo	Poliomyelitis (cVDPV1)	Grade 2	3/21/2023	3/1/2023	12/13/2023	1	1	-	-
No Circulating vaccine-derived poliovirus type 1 (cVDPV1) cases were reported this week. As of 6 December 2023, only one case reported this year.									
Côte d'Ivoire	Dengue	Grade 3	7/10/2023	6/19/2023	12/31/2023	3.912	323	3	0.1%
An outbreak of Dengue fever is ongoing in Ivory Coast. A total of 3 912 cases have been reported from 1 January 2023 to 31 December 2024, with 323 confirmed cases and 3 deaths (CFR: 0.4%).									
Democratic Republic of the Congo	Floods	Ungraded	1/9/2024	1/9/2024	1/9/2024	2,000,000	200	300	
Severe floods in the Democratic Republic of Congo for many weeks have caused catastrophic impacts across multiple regions. Some of the most affected areas are Ituri and Mongala provinces as well as the capital Kinshasa. As of 5 January 2024, the Minister of Social Affairs, Humanitarian Actions and National Solidarity announced that at least 300 people have died due to the floods and over 43 750 houses destroyed									
Democratic Republic of the Congo	Humanitarian crisis	Grade 3	12/20/2016	4/17/2017	12/9/2023	-	-	-	-
In the latest reporting week (week 49), the humanitarian situation in The Democratic Republic of the Congo (DRC) was marked by flooding in several localities of the Tshopo province with 97 516 people affected so far, including 71 388 internally displaced persons (IDPs). There was an arrival in week 48 of 2 135 new IDPs in the provinces of Tshopo (1 104) and South Kivu (1 031) fleeing violence in their respective localities.									
Democratic Republic of the Congo	Anthrax	Grade 2	1/17/2024	11/15/2023	11/15/2023	5	1	2	40.0%
A human case of anthrax was confirmed on 15 November 2023 in Lume health area, Mutwanga health district, Beni territory, North Kivu Province. At that time, 5 suspected cases including 2 deaths were reported. In December 2023, suspected anthrax cases were reported in another health district of Beni, Mangina. Investigations are ongoing.									
Democratic Republic of the Congo	Cholera	Grade 3	1/16/2015	1/1/2023	11/12/2023	62.803	1.866	715	1.1%
As of 12 November 2023, the country had reported 62 803 cumulative cases, with 715 deaths (CFR 1.1%) across 12 affected provinces.									
Democratic Republic of the Congo	Measles	Ungraded	10/12/2021	1/1/2023	12/10/2023	305.404	7.214	5.684	1.9%
A total of 305 404 suspected measles cases and 5 688 deaths have been reported from week 1 through week 49 (ending 10 December), 2023. About 77% of these suspected cases are children under five years of age. Among the suspected cases reported, 7 214 were investigated through the case based surveillance system and 3 980 were IgM positive for measles, while 603 were IgM positive for rubella.									
Democratic Republic of the Congo	Mpox	Protracted 2	3/30/2019	1/1/2023	12/3/2023	13.357	714	607	-
In The Democratic Republic of the Congo , this year, from January to 3 December 2023, a total of 714 confirmed cases are reported out of 13 357 suspected cases and 607 related deaths.									
Democratic Republic of the Congo	Poliomyelitis (cVDPV1)	Grade 2	8/27/2022	8/27/2022	1/3/2024	247	247		0.0%
As per the Global Polio Eradication Initiative (GPEI), two cVDPV1 cases were reported this week in Tanganyika bringing the number of cases to 97 last year and 150 in 2022.									
Democratic Republic of the Congo	Poliomyelitis (cVDPV2)	Grade 2	2/26/2021	1/1/2022	1/3/2024	489	489		0.0%
As per the Global Polio Eradication Initiative (GPEI), one cVDPV2 case was reported this week in Haut Lomami. There have been 117 cases in 2023 and 372 in 2022.									
Eritrea	Poliomyelitis (cVDPV2)	Grade 2	6/2/2022	6/7/2022	12/15/2023	2	2		0.0%
No new case of cVDPV2 in 2023 as at week 50. One case was reported in 2022, and another one reported in 2021. The latter case was confirmed on 2 June 2022 by the Ethiopian National Polio Laboratory.									

Ethiopia	Food insecurity (Horn of Africa crisis)	Grade 3	2/17/2022	1/1/2022	1/31/2024	-	-	-	-
According to the January 2024 Famine Early Warning Systems Network (FEWS NET) food security outcomes projection. Households in northern Ethiopia increasingly face extreme hardships accessing food and income which are driving ongoing Emergency (IPC Phase 4) and Crisis (IPC Phase 3) outcomes. Households have limited food stocks resulting from the failure of the 2023 meher harvest, and income-earning activities have yet to recover from recent conflict.									
Ethiopia	Humanitarian crisis (Northern Ethiopia)	Grade 3	11/4/2020	11/4/2020	1/25/2024	-	-	-	-
In northern Ethiopia, humanitarian crisis continues affecting the three regions (Tigray, Amhara and Afar). Amhara is currently with ongoing conflict. Drought conditions continue to worsen in the three regions. An integrated multi-sectoral humanitarian response is urgently needed in drought-affected regions to avert a deterioration									
Ethiopia	Cholera	Grade 3	9/17/2022	8/1/2022	2/13/2024	32.548	32.548	488	1.5%
Since the index case in August 2022, there have been 32 548 cholera cases as at week 5 of 2024. Within this same period, there have been 488 deaths (CFR 1.46%).									
Ethiopia	Dengue	Grade 3	5/16/2023	5/10/2023	2/21/2024	23.251	23.251	17	0.0%
Since 4 April 2023, two districts (Logia and Mille) in the Afar region of northeastern Ethiopia have been experiencing an outbreak of dengue fever. As of 13 February 2024, a total of 23 251 cases and 17 deaths associated deaths (CFR 0.08%) have been reported from five affected regions.									
Ethiopia	Malaria	Ungraded	1/31/2023	1/1/2023	2/11/2024	-	-	-	-
Ethiopia is experiencing malaria outbreak for years now. Cumulatively in 2024, from 1 January to 11 February, a total of 525 790 malaria cases and 120 deaths were reported nationwide. Most malaria cases, over 70%, were reported from four regions: Oromia, Amhara, Southwest Ethiopia (SWEPRS), and South Ethiopia									
Ethiopia	Measles	Ungraded	4/13/2017	1/1/2023	2/21/2024	50.4	50.4	412	0.8%
Since August 12, 2023, a total of 237 Woredas across all regions in Ethiopia have been affected by measles outbreak. Currently outbreak remains active in 66 Woredas across the country: As at 12 February 2024, a total of 50 400 cases with 412 deaths have been reported, a Case Fatality Rate (CFR) of 0.82%.									
Ethiopia	Poliomyelitis (cVDPV2)	Grade 2	6/24/2019	5/20/2019	2/13/2024	69	69		0.0%
As of week 50, 2023, there have been a total of 69 reported cases of circulating vaccine-derived poliovirus type 2 (cVDPV2). There was one case reported in 2022, one case in 2021, 10 cases in 2020, and 43 cases in 2019. It's important to highlight that no cases have been reported in 2023.									
Gabon	Diphtheria	Ungraded	1/23/2024	12/1/2023	1/25/2024	1	1	1	100.0%
On 23 January 2024, Gabon reported a confirmed case of Diphtheria. The affected individual is a 9-year-old male from Bitam Health District in Gabon. The onset of symptoms occurred on 1 December 2023, and he sought medical consultation on 3 December 2023 in the Enongal health area, Ebolowa health district in Cameroon. The person died on 7 December 2023. The sample tested positive for Diphtheria on 23 January 2024.									
Ghana	Mpox	Protracted 2	6/8/2022	5/24/2022	2/13/2024	138	138	5	3.6%
As of week 5 of 2024, there have been 138 confirmed cases and 5 deaths(CFR 3.6%) reported from the 261 Districts.									
Ghana	Poliomyelitis (cVDPV2)	Grade 2	8/23/2019	7/23/2019	2/13/2024	34	34		0.0%
Ghana first reported a cVDPV2 outbreak in 2019. The country has a cumulative of 34 cVDPV2 AFP cases. 19 cVDPV2 cases were documented in 2019, 12 in 2020, 3 in 2022 and no cases in 2023. No new case was documented as of week 6 of 2024.									
Guinea	Diphtheria	Grade 2	8/21/2023	7/4/2023	1/14/2024	2.24	2.081	85	3.8%
An outbreak of diphtheria has been reported in the Kankan region of Guinea since 4 July 2023. As of 31 December 2023, 2 240 suspected cases had been reported from the Kankan, Faranah, Labé, Mamou, Conakry and N'Zérékoré regions, including 2 081 confirmed cases and 85 deaths. Of the confirmed cases, 42 were laboratory-confirmed, 1 945 were clinically compatible and 94 were epidemiologically linked. The Siguiri health district in the Kankan region is the epicenter of the outbreak, with 97% of suspected cases reported.									
Guinea	Lassa Fever	Ungraded	2/3/2024	1/25/2024	2/3/2024	1	1	0	0.0%
On 03 February 2024, WHO was notified of a confirmed case of Lassa fever in a 40-year-old driver of N'Zérékoré prefecture, Guinée forestière region of southeastern Guinea. The case-patient is under care at the N'Zérékoré regional hospital. A total of 19 contacts were initially identified. Investigations are ongoing.									
Kenya	Fire Incident	Ungraded	2/2/2024	2/1/2024	2/2/2024	-	-	-	-
At least 3 people died and nearly 300 people were injured in a fire incident following a gas explosion in Embakasi district in Nairobi, Kenya, in the night of 1 February 2024. Some 271 people were evacuated in different hospitals in Nairobi.									
Kenya	Food insecurity (Horn of Africa crisis)	Grade 3	2/17/2022	1/1/2022	1/27/2024	-	-	-	-
The Acute Food Insecurity Situation projection period (October 2023 to January 2024) suggests that, despite some seasonal improvements, Turkana, Marsabit, and Mandera will likely remain in Crisis, IPC Phase 3, while other counties are expected to transition to Stressed, IPC Phase 2. Approximately 1.5 million people are likely to be classified in IPC Phase 3 or above, out of which 1.3 million are in IPC Phase 3, Crisis and 266 000 are in IPC Phase 4, Emergency.									
Kenya	Anthrax	Grade 2		4/10/2023	1/17/2024	20		3	15.0%
As of 31 August 2023, cumulative 20 cases and 3 deaths were reported. Seventeen of these cases and three deaths were reported in April-May 2023. In August 2023, three new cases emerged in Kandara sub-county, all cases were linked to the handling of an infected animal. No new cases have been reported after August.									
Kenya	Cholera	Grade 3	10/19/2022	10/5/2022	2/18/2024	12.521	577	206	1.6%
A cholera outbreak has been ongoing in Kenya since 26 October 2022. As of 18 February 2024, a total of 12 521 cases, with 577 confirmed by culture, and 206 deaths (CFR 1.7%) have been reported in 28 affected Counties.									

Kenya	Visceral leishmaniasis	Ungraded	3/31/2019	1/3/2020	12/18/2023	2.395	2.205	10	0.4%
Since January 2020, a total of 2395 visceral leishmaniasis confirmed and suspected cases with 10 deaths (CFR 0.5%), have been reported in nine counties namely: Marsabit, Garissa, Kitui, Baringo, West Pokot, Mandera, Wajir, Tharaka Nithi and Isiolo. The outbreak is active in West Pokot County. No new cases were reported as of 17 December 2023.									
Kenya	Measles	Ungraded	6/29/2022	1/1/2023	2/4/2024	1.992	403	27	1.4%
The ongoing outbreak has affected 17 counties so far. Cumulatively, 1 992 cases, with 403 confirmed cases and 27 deaths (CFR 1.4%).									
Kenya	Poliomyelitis (cVDPV2)	Grade 2	7/6/2023	5/26/2023	1/10/2024	13	13		0.0%
According to Global Polio Eradication Initiative, no cVDPV2 cases were reported this week. There have been eight cases reported in 2023.									
Kenya	Rift Valley Fever	Ungraded	1/24/2024	1/25/2024	1/25/2024	13	1	0	0.0%
Between 9 and 19 January, 2024, Marsabit County Referral Hospital reported 13 suspected cases of Rift Valley Fever (RVF). CDC lab tests in Nairobi confirmed one positive case on 18 January from a 38-year-old woman in Marsabit County. This coincides with reports of animal deaths in Marsabit and Wajir Counties, suggesting a possible outbreak in these areas prior to the confirmed human case.									
Kenya	Suspected brew poisoning	Ungraded	2/9/2024	2/9/2024	2/8/2024	21		9	42.9%
On 9 February 2024, a brew poisoning incident was reported from Kirinyaga County involving 21 people who developed blurred vision, abdominal pain, body weakness and vomiting between 6 and 8 February 2024 after consuming a brew on 5 February 2024 at a local bar in a village in Kirinyaga Central sub county. Nine fatalities were recorded.									
Liberia	Lassa Fever	Ungraded	3/3/2022	1/6/2022	2/13/2024	376	110	32	8.5%
From January 6, 2022, to week 6 of 2024, a cumulative total of 376 cases of Lassa Fever have been reported with 110 confirmed and 32 deaths (CFR 29%).									
Liberia	Measles	Ungraded	2/3/2022	12/13/2021	2/13/2024	13.124	12.475	95	0.7%
Since the measles outbreak started on 13 December 2021, there have been 13 124 suspected cases, 12 475 confirmed cases, and 95 deaths with CFR 0.7%, as of week 5 of 2024. Only Maryland County remains in outbreak with 433 ongoing cases.									
Liberia	Mpox	Protracted 2	7/21/2022	7/23/2022	2/13/2024	119	7		0.0%
Liberia confirmed its first case of Mpox on 23 July 2022, with a cumulative total of 119 suspected cases reported and 7 confirmed. The most recent case was in week 42 of 2023 in Grand Kru and Nimba counties. No new cases have been reported in 2024.									
Madagascar	Malnutrition crisis	Protracted 2	7/1/2021	1/1/2021	1/17/2024	3,900,000	3,900,000	-	-
In the Grand Sud, malnutrition has stabilized due to increased humanitarian aid and good rainfall from January to June 2023. Drought conditions improved in June 2023 compared to the previous two months owing to increased rainfall. However, the situation remains fragile: 3.9 million people are in need, with four of 11 districts in Crisis phase (IPC 3) until September, affecting 575,470 severely food-insecure individuals. A worsening of food security is anticipated from January 2024, mainly due to El Niño effect.									
Malawi	Anthrax	Grade 2	11/27/2023	11/28/2023	11/28/2023	1	1		0.0%
On 27 November 2023, a case of human cutaneous anthrax was confirmed from Mzimba district, northern Malawi in a 6-year-old female, no death reported so far.									
Malawi	Cholera	Grade 3	3/3/2022	3/3/2022	1/18/2024	59.262	59.125	1.773	3.0%
Twenty-nine districts have reported Cholera cases since March 2022 in the Machinga district. As of 18 February 2024, a cumulative total of 59 262 cases and 1 773 deaths (CFR 3.0%) have been reported since the onset of the outbreak.									
Malawi	Measles	Ungraded	11/6/2023	11/6/2023	11/6/2023	32	11	2	6.3%
On 6 November 2023, the Ministry of Health released a press statement on confirmed measles outbreak in Lilongwe district following the notification of 11 laboratory confirmed cases within the same geographical area 36. As of 6 November, 32 suspected cases including 11 confirmed are reported. Two suspected measles related deaths were also reported									
Malawi	Poliomyelitis (WPV1)	Grade 2	1/31/2022	2/1/2022	2/21/2024	1	1		0.0%
One positive case of wild WPV1 was detected in Lilongwe from a child with the date of onset of paralysis on 19 November 2021. As of 21 February 2023, no other cases have been reported. Malawi continues participating in the multi-country, subregional outbreak response to control the WPV1 outbreak.									
Mali	Humanitarian crisis (Sahel region)	Grade 2	9/11/2017	9/11/2017	12/19/2023	7,500,000	7,500,000		0.0%
Mali is facing prolonged conflict, poverty, climate shocks, and growing insecurity. However, the current Humanitarian Response Plan for Mali is severely underfunded, with only 11% of the required funding secured. There has been a significant increase in IDPs in the regions of Kidal (32.8%) and Ménaka (20%). As of week 50, over 7.5 million people are in need of humanitarian assistance.									
Mali	Dengue	Grade 3	9/12/2023	8/31/2023	1/7/2024	5.532	846	34	0.6%
On 9 September 2023, the Malian Ministry of Health reported a case of dengue in a 44-year-old female resident of Bacodjicoroni Golf, commune V, Bamako district. The case had onset of symptoms on 31 August 2023. On 9 September 2023, the sample collected from the case was confirmed positive for dengue virus by real-time polymerase chain reaction (RT-PCR) at the University Clinical Research Center (UCRC) laboratory. As of 7 January 2024, 5 532 suspected cases, including 846 confirmed cases and 34 deaths have been reported.									
Mali	Measles	Ungraded	2/20/2018	1/1/2023	12/31/2023	780	354		0.0%
From week 1 to week 52 of 2023, 780 suspected measles cases were laboratory tested in Mali, of which 354 were positive and 426 were negative. A total of 32 of the 75 health districts (42.7%) recorded at least one confirmed measles outbreak in 2023.									
Mali	Zika	Ungraded	12/7/2023	12/10/2023	12/24/2023	22	22		0.0%

On 6 December 2023, the Ministry of Health of Mali reported 12 cases and zero deaths of Zika virus disease confirmed by real time polymerase chain reaction (RT-PCR) at the Molecular and Genomic Biology Laboratory of the University Center for Clinical Research (UCRC) of Point G. Three cases were confirmed on 1 December 2023 and nine cases on 4 December 2023. As of 24 December 2023, a total of 22 confirmed cases and zero deaths were reported from 10 health districts in Koulikoro region (9), Sikasso region (1), and Bamako district (12).

Mauritania	Measles	Ungraded	3/7/2023	12/26/2022	12/31/2023	988	269	6	0.6%
------------	---------	----------	----------	------------	------------	-----	-----	---	------

Mauritania has been experiencing a measles outbreak since early 2023. As of 31 December 2023, the country has reported 988 suspected cases of measles, including 161 laboratory-confirmed cases and six deaths.

Mauritania	Rift Valley fever	Ungraded	11/27/2023	12/1/2023	12/1/2023	1	1		0.0%
------------	-------------------	----------	------------	-----------	-----------	---	---	--	------

A case of Rift Valley fever confirmed on 23 November 2023 from the locality of Ejare in Radhi municipality was reported in a 32-year-old male shepherd in Ejare, Radhi. He developed symptoms including fever and epistaxis, consulted at Tintan Health Center where RVF was suspected.

Mauritius	Dengue	Grade 3	12/17/2023	12/17/2023	1/14/2024	40	40	0	0.0%
-----------	--------	---------	------------	------------	-----------	----	----	---	------

From week 50, 2023 (ending 17 December 2023) to week 2, 2024 (ending 14 January 2024), the country has recorded an upsurge in dengue cases (40 confirmed cases reported). In week 2, 2024 (ending 14 January 2024), 16 laboratory confirmed cases were reported. With the recent rains that have fallen on Mauritius, this situation is expected to worsen.

Mozambique	Humanitarian crisis in Cabo Delgado	Protracted 2	1/1/2020	10/12/2023	8/6/2023	2,000,000	2,000,000	-	-
------------	-------------------------------------	--------------	----------	------------	----------	-----------	-----------	---	---

Most poor and very poor households in Mozambique face Minimal (IPC Phase 1) outcomes as the ongoing harvest improves food access and availability. In Cabo Delgado, ongoing humanitarian assistance drives Stressed (IPC Phase 2) outcomes, with Crisis (IPC Phase 3) outcomes persisting in conflict-affected areas. There have been a reduced number of attacks.

Mozambique	Cholera	Grade 3	9/14/2022	10/12/2023	12/19/2023	38.793	38.793	153	0.4%
------------	---------	---------	-----------	------------	------------	--------	--------	-----	------

The current cholera outbreak in the country started in Niassa province on 14 September 2022. As of 07 December 2023, 38 793 cholera cases have been recorded with 153 deaths (CRF 0.4%) in 11 affected provinces, .

Mozambique	Poliomyelitis (cVDPV1)	Grade 2		10/31/2023	2/21/2024	4	4		0.0%
------------	------------------------	---------	--	------------	-----------	---	---	--	------

One cVDPV1 case was reported in Zambezia bringing the number of 2023 cases to four.

Mozambique	Poliomyelitis (cVDPV2)	Grade 2	12/7/2018	1/1/2021	1/18/2024	7	7		0.0%
------------	------------------------	---------	-----------	----------	-----------	---	---	--	------

According to the Global Polio Eradication Initiative report for 10 January 2024, No case of circulating vaccine-derived poliovirus type 2 (cVDPV2) has been reported in 2024, One case was reported in 2023. The number of cases in 2022 remains four. There were two cases reported in 2021.

Mozambique	Poliomyelitis (cVDPV1)	Grade 2	5/17/2022	5/18/2022	2/21/2024	8	8		0.0%
------------	------------------------	---------	-----------	-----------	-----------	---	---	--	------

A wild poliovirus type 1 (WPV1) was detected in Mozambique, with a 12-year-old female patient from Changara district, Tete province, showing paralysis onset on March 25, 2022. Her stool samples, collected on April 1 and 2, 2022, were linked to the virus found in Malawi. Laboratory analysis began on April 4, 2022. Eight cases were reported by the Global Polio Eradication Initiative as of August 10, 2022. No new wild polio cases were reported in Mozambique as of February 21, 2024.

Niger	Humanitarian crisis (Sahel region)	Grade 2	2/1/2015	2/1/2015	2/13/2024	4,300,000	4,300,000		0.0%
-------	------------------------------------	---------	----------	----------	-----------	-----------	-----------	--	------

The number of internally displaced people in Niger has reached a record high, with an increase from 1.9 million in 2017 to 4.3 million individuals (15% population) in 2024, indicating a significant rise in the need for humanitarian assistance. On 28 July, Niger experienced a military coup and this marks the third Sahel country in less than three years. Acute food insecurity affects 3.3 million people, while a staggering 7.3 million are at risk of their situation deteriorating due to the ongoing crisis.

Niger	Dengue	Grade 3	11/3/2023	1/1/2023	12/19/2023	148			0.0%
-------	--------	---------	-----------	----------	------------	-----	--	--	------

A total of 148 cases of dengue fever, including zero deaths, have been reported in Niger in 2023.

Niger	Diphtheria	Grade 2	8/28/2023	7/4/2023	12/24/2023	2.721	2.448	141	5.2%
-------	------------	---------	-----------	----------	------------	-------	-------	-----	------

An outbreak of diphtheria has been confirmed in Matameye health district, Zinder region. The first case was reported on 17 July 2023. As of 24 December 2023, 2721 suspected cases, including 141 deaths (CFR 5.5%) were reported. Public health response activities are ongoing in affected districts.

Niger	Measles	Ungraded	4/5/2022	1/1/2022	10/16/2023	1.802	567		0.0%
-------	---------	----------	----------	----------	------------	-------	-----	--	------

As of epidemiological week 41, 2023 (ending 16 October), 1 802 suspected measles cases were reported, of which 995 were investigated across 66 districts in the eight regions. Of these cases, 57% (n=578) were laboratory-confirmed. Additionally, 91% (n=66) of the districts reported at least one suspected case, and 36 (49%) health districts have reached the epidemic threshold since the beginning of the year.

Niger	Meningitis	Ungraded	12/7/2022	10/31/2022	10/16/2023	2.261	736	129	5.7%
-------	------------	----------	-----------	------------	------------	-------	-----	-----	------

A meningitis outbreak was been declared in the Dungass health district in Zinder region. The first case was reported on 31 October 2022 and confirmed on 23 November 2022, with Neisseria meningitidis identified as the causative agent. As of 16 October 2023, 2 261 suspected cases of meningitis, including 736 laboratory-confirmed cases and 129 deaths (CFR 5.7%) were reported.

Niger	Poliomyelitis (cVDPV2)	Grade 2	1/1/2020	1/1/2021	10/25/2023	34	34		0.0%
-------	------------------------	---------	----------	----------	------------	----	----	--	------

No new case of cVDPV2 was reported during this week. The total number of cases reported in 2022 is 16. There were 18 cases reported in 2021.

Nigeria	Humanitarian crisis (Sahel region)	Grade 2	10/10/2016	10/10/2016	11/15/2023	8,300,000	8,300,000		0.0%
---------	------------------------------------	---------	------------	------------	------------	-----------	-----------	--	------

People face emergency levels of food insecurity, with very high rates of severe acute malnutrition that could lead to death in Borno, Adamawa and Yobe states. As of week 50, 2023, over 6 million people are targetted for humanitarian aid, 8.3 million people are in need of humanitarian assistance, 2.2 million IDPs, and 4.3 million people in need of food security aid.

Nigeria	Cholera	Grade 3		1/1/2024	1/28/2024	169	9	2	1.2%
From 1 to 28 January 2024, 169 suspected cholera cases were reported in two states, with nine confirmed cases and two deaths (CFR: 1.2%). Children under 5 are most affected, followed by those aged 5-14, with males comprising 52%. Bayelsa State reported 144 cases (85%), with Southern Ijaw LGA recording 81 cases (48% of the national total). Cross River State reported 25 cases (15%). Compared to 2023, suspected cases decreased by 71%, with cumulative deaths down by 90% in 2024.									
Nigeria	Dengue	Grade 3	11/1/2023	1/1/2023	12/19/2023	72	14		0.0%
Currently, there is an ongoing outbreak of Dengue fever in Sokoto state, Nigeria, with 72 cases, including 14 laboratory-confirmed cases and zero deaths. Males represent 53% of all cases and the age group between 31 to 40 years old is more affected (43%).									
Nigeria	Diphtheria	Ungraded	12/1/2022	12/1/2022	12/24/2023	22.293	13.387	598	2.7%
Between week 19, 2022 and week 51, 2023, 22 293 suspected cases of diphtheria were reported from 36 states in Nigeria. Kano (14 126), Yobe (2 238), Katsina (1 734), Bauchi (1 376), Borno (1 148), Kaduna (573) and Jigawa (256) accounted for 96.2% of reported suspected cases. Of the 22,293 suspected cases reported, 13 387 (60.1%) were confirmed, including 346 laboratory-confirmed, 510 epidemiologically linked, and 12 531 clinically compatible cases. The majority (9,048; 67.6%) of the confirmed cases were in children aged 1-14 years. Only 3 376 (25.2%) of the 13 387 confirmed cases were fully vaccinated with a diphtheria toxoid-containing vaccine. A total of 598 deaths (CFR: 4.5%) were recorded among the confirmed cases.									
Nigeria	Lassa Fever	Ungraded	1/8/2023	1/1/2024	1/21/2024	892	211	43	4.8%
As of week 3 of 2024, 892 suspected cases, including 211 laboratory-confirmed cases, were reported, with 43 reported deaths among confirmed cases, resulting in a CFR of 20.4%. Confirmed cases, including four HCWs, were reported from 17 states and 54 LGAs, with the highest number of cases (91.5%) reported from Ondo (53 cases, five deaths), Edo (52 cases, 8 deaths), Bauchi (48 cases, 15 deaths), and Benue (17 cases, three deaths) states.									
Nigeria	Meningitis	Ungraded	1/29/2024	10/8/2023	1/28/2024	281	26	40	14.2%
An increase in meningitis cases has been reported in Nigeria since October 2023. From W40, 2023 (ending 8 Oct 2023) to W4, 2024 (ending 28 Jan 2024), a total of 281 cases including 40 deaths (CFR 14%) were reported from 47 LGAs in 19 states. Cumulatively, twenty-six cases were laboratory confirmed, of which over 80% tested positive for <i>Neisseria Meningitidis</i> C. Children aged less than 15 years old are the most affected. The ICG request for meningococcal vaccines is under finalization.									
Nigeria	Mpox	Protracted 2	1/31/2022	1/1/2022	12/31/2023	3.771	1.086	17	0.5%
Overall, since the re-emergence of Mpox in September 2017, 3771 suspected cases have been reported from 36 States and FCTs in the country. Of these 3771 suspected cases, 1086 (28.7%) were confirmed (with males predominantly affected) from 34 States and FCT. seventeen (17) deaths have been recorded since the re-emergence in 2017.									
Nigeria	Poliomyelitis (cVDPV2)	Grade 2	6/1/2018	1/1/2022	1/31/2024	74	67	-	-
No cVDPV2 case was reported this week. There have been 26 cVDPV2 cases reported this year and 48 cases in 2022.									
Senegal	Chikungunya	Ungraded	6/8/2023	6/8/2023	12/31/2023	344	344		0.0%
The first case of Chikungunya in Senegal in 2023 was reported on 20 January 2023 from the district of Kebemer. As of 31 December 2023, the cumulative number of confirmed cases is 344.									
Senegal	Dengue	Grade 3	11/14/2022	1/31/2023	12/31/2023	310	310	1	0.3%
In 2023, the first confirmed case of dengue was recorded in week 1. As of week 52 (ending 31 December), 310 confirmed cases of dengue were reported, of which 55% were male. Of the reported cases, 270 (87%) were confirmed by PCR and 28 cases (9%) were only IgM positive for dengue. Of the PCR-confirmed cases, 12 cases were also IgM positive. There were six cases of severe dengue and one associated death. Pikine district (135 cases, 43.5%) has the highest number of dengue cases, followed by Thiologie (38 cases, 12.3%), and Yeumbeul (31 cases, 10%).									
Senegal	Measles	Ungraded	7/4/2022	1/1/2023	12/31/2023	1.699	539		0.0%
From epidemic week 1 to 52 of 2023 (ending 31 December 2023), 1 699 suspected cases of measles were reported in Senegal, including 539 confirmed cases and no deaths. In week 52, 2023, five districts crossed the epidemic threshold, including three for the first time (Malem Hoddar, Podor, Kaffrine) and two for the second time in 2023 (Velingara, Kaolack).									
Senegal	West Nile Fever	Ungraded	2/7/2024	1/23/2024	2/7/2024	1	1	0	0.0%
On 7 February 2024, the Ministry of Health of Senegal was informed by Institut Pasteur of Dakar of a confirmed West Nile virus case in Matam region. The case is a 23-year-old male residing in Thiologie commune, Matam department, who had onset of symptoms of fever, headache and myalgia on 23 January 2024. On 26 January 2024, he presented at a health facility where he tested negative for malaria. A symptomatic treatment was initiated. A blood sample was sent to Institut Pasteur of Dakar on 02 February 2024 for further testing. The sample tested IgM positive for West Nile virus on 07 February 2024. No additional case was reported. Further investigations are ongoing.									
Senegal	Zika	Ungraded	12/11/2023	11/14/2023	12/18/2023	2	2		0.0%
In week 49, Senegal health authorities has reported the confirmation of two cases of Zika virus disease in the districts of Sédhiou and Sokone through Polymerase Chain Reaction (PCR) testing. Details regarding the age of the women in Sokone remain unspecified, and their pregnancy status has not been disclosed. There is a potential risk for adverse outcomes including microcephaly, other congenital malformations in infants, and possibilities of premature birth or miscarriage. Investigation reports are forthcoming.									
South Africa	Cholera	Grade 3	1/20/2024	1/20/2024	2/13/2024	117	6	0	0.0%
Cholera outbreak has been ongoing in South Africa since December 4, 2023. It started with imported cases linked to ongoing outbreaks in Southern Africa and two locally transmitted cases from Limpopo in January. As of February 13, 2024, 117 cumulative suspected and six confirmed cases have been reported with no deaths.									
South Africa	Measles	Ungraded	10/17/2022	10/13/2022	12/26/2023	7.054	1.338		0.0%
From 8 October 2022 to 21 December 2023, a total of 1 338 laboratory-confirmed cases were reported from eight provinces. Limpopo had reported the most number of cases (533), followed by Gauteng (265), North West (226) and Western Cape (56).									
South Sudan	Food insecurity (Horn of Africa crisis)	Grade 3	12/18/2020	4/5/2021	1/27/2024	-	-	-	-
In the projection period of December 2023 to March 2024 (harvest/ post-harvest season), the situation is projected to improve marginally as a result of seasonal availability of harvests. An estimated 5.79 million people (45.8 % of the country population) are projected to face IPC Phase 3 or above (Crisis or worse), including 25 000 people likely to be in IPC Phase 5 (Catastrophe) and 1.71 million people likely to be in Phase 4									
South Sudan	Humanitarian crisis	Protracted 3	8/15/2016	8/15/2016	1/25/2024	-	-	-	-

The humanitarian situation in South Sudan remains grim, with insecurity, sub-national violence and climatic shocks adversely affecting the food and nutrition security situation of many families, compounded by the Sudan crisis influx. The most recent Integrated Food Security Phase Classification results show that South Sudan remains one of the countries with the highest proportion of food-insecure people globally. Regarding the impact of the ongoing Sudan conflict crisis, as of 21 January 2024, 516 658 people were recorded crossing the border from Sudan to South Sudan since 15 April 2023, with 81% of these arrivals being South Sudanese and 18 % being Sudanese

South Sudan	Hepatitis E	Ungraded	1/3/2018	1/1/2019	12/19/2023	4.253	63	12	0.3%
-------------	-------------	----------	----------	----------	------------	-------	----	----	------

The current outbreak in Bentiu POC continues. As of 18 September 2023, a cumulative total of 63 cases with symptoms and signs consistent with HEV disease and 12 deaths (CFR 19%) were reported from Fangak. Most cases (36.5%) are from the village of Old Fangak. The median age group affected is 33 years (Interquartile range: 2 -59). Males are the most affected accounting for 58.7% of all reported cases.

South Sudan	Measles	Ungraded	2/23/2022	1/1/2023	12/24/2023	7.862	586	173	2.2%
-------------	---------	----------	-----------	----------	------------	-------	-----	-----	------

Measles outbreak is still active in South Sudan with new counties confirming outbreaks that include Magwi, Tonj East, Maridi, and Mundri East. As of week 50, 2023, 7 862 suspected measles cases were reported, with 586 (7.6%) lab-confirmed, 173 deaths with a case fatality ratio of 2.2%

South Sudan	Yellow Fever	Ungraded	12/24/2023	12/24/2023	1/28/2024	38	1	5	13.2%
-------------	--------------	----------	------------	------------	-----------	----	---	---	-------

In South Sudan, the official yellow fever outbreak was declared on 6 January 2024 by the health authorities, after confirmation of one yellow fever case on 24 December 2023. The sample collected tested positive for yellow fever by polymerase chain reaction (PCR) on 24 December 2023 at the National Public Health Laboratory and later the quality control check at the Regional Reference Laboratory of Uganda Virus Research Institute (UVRI) confirmed the result on 4 January 2024. As of 28 January 2024, 38 yellow fever cases including 37 suspected cases and one confirmed case were reported from counties in Western Equatoria State.

Tanzania, United Republic of	Cholera	Grade 3	10/3/2023	9/7/2023	12/12/2023	660	53	19	2.9%
------------------------------	---------	---------	-----------	----------	------------	-----	----	----	------

For the ongoing cholera outbreak, as of 12 December 2023, a total of 660 cholera cases and 19 deaths (CFR: 2.9%) are reported. Of the reported cases, female (54.1%, 358) accounted for the majority of cases. The index case was reported in Mara region on 6 September 2023.

Tanzania, United Republic of	Poliomyelitis (cVDPV2)	Grade 2	7/19/2023	7/17/2023	2/13/2024	2	2		0.0%
------------------------------	------------------------	---------	-----------	-----------	-----------	---	---	--	------

No cVDPV2 cases were reported this week. There have been two cases reported in the country for 2023.

Togo	Cholera	Grade 3	12/15/2023	12/15/2023	1/31/2024	1	1		0.0%
------	---------	---------	------------	------------	-----------	---	---	--	------

On 14 December, the Togolese Ministry of Health and Public Hygiene has announced the confirmation of a cholera case in the Gulf health district of Greater Lomé. The patient is a 45-year-old woman from Anfamé. In response, the Ministry is actively conducting community investigations to identify any additional cases or fatalities.

Togo	Poliomyelitis (cVDPV2)	Grade 2	10/18/2019	9/13/2019	10/26/2023	19	19		0.0%
------	------------------------	---------	------------	-----------	------------	----	----	--	------

No cVDPV2 case was reported this week. There were two cases reported in 2022. No cases were reported in 2021. There were nine cases in 2020, while the total number of cVDPV2 cases reported in 2019 remains at eight.

Uganda	Food insecurity (Horn of Africa crisis)	Grade 3	2/17/2022	1/1/2022	1/27/2024	-	-	-	-
--------	-----------------------------------------	---------	-----------	----------	-----------	---	---	---	---

Uganda hosts slightly over 1.4 million refugees in 13 districts. The population analyzed includes 12 refugee host districts in which 6 are classified in IPC Phase 3 or above: Adjumani, Kiryandongo, Kyegegwa, Lamwo, Obongi and Yumbe. The food security situation is projected to gradually deteriorate during the projection period of February to June 2024, with the population in IPC Phase 3 or above increasing from 846 000 people (20 % of the analyzed population) to 963 000 people (23 % of the analyzed population).

Uganda	Anthrax	Grade 2	11/27/2023	11/19/2023	1/7/2024	88	22	11	12.5%
--------	---------	---------	------------	------------	----------	----	----	----	-------

Human anthrax outbreak which started in 2023 is still ongoing in Uganda. The following districts have been affected: Kyotera, Kween, Ibanda, Lwengo and Kazo. The later confirmed the outbreak on 5 January 2024. So far, since the start of the outbreak on 3 August 2023 through 5 January 2024, 88 cases have been reported including 22 confirmed and 11 deaths (CFR. 12.5%)

Uganda	Cholera	Grade 3	1/22/2024	1/21/2024	1/31/2024	14	4	0	0.0%
--------	---------	---------	-----------	-----------	-----------	----	---	---	------

On January 21, 2024, 14 suspected cholera cases from Madani, Sudan, were reported by Elegu PoE to Adjumani DHT, Uganda. Suspected to have consumed contaminated fruits, 13 showed symptoms and were admitted to Nyumanzi HC III. As of January 31, 2024, there were 4 confirmed and 10 suspected cases in the isolation unit.

Uganda	Crimean-Congo hemorrhagic fever	Ungraded	2/12/2024	1/28/2024	2/4/2024	13	5	4	30.8%
--------	---------------------------------	----------	-----------	-----------	----------	----	---	---	-------

According to the Week 4 epidemiological bulletin from Uganda, there is an ongoing outbreak of Crimean-Congo hemorrhagic fever in Kampala and Lyantonde. The outbreak was identified through routine surveillance of viral hemorrhagic fever. As of 5 February 2024, a total of 13 cases have been reported, including five confirmed cases and four deaths, resulting in a case fatality ratio of 30.8%.

Uganda	Malaria	Ungraded	6/5/2023	7/2/2023	1/14/2024	-	-	-	-
--------	---------	----------	----------	----------	-----------	---	---	---	---

The Uganda Public Health Operation Centre (PHOC) is currently activated for malaria outbreak in three districts: Serere, Amolatar and Kibuku.

Uganda	Measles	Ungraded	10/4/2023	9/28/2023	1/26/2024	228	24	2	0.9%
--------	---------	----------	-----------	-----------	-----------	-----	----	---	------

Measles outbreak is still ongoing in Uganda. On top of Kiryandongo and Kyegegwa districts affected last year, Kyenjojo district confirmed a measles outbreak on 19 January 2024. As of 26 January 2023, a total of 81 measles cases including six confirmed cases and two suspected deaths have been reported. Cumulatively, 228 cases, 24 confirmed and two suspected deaths are reported from the three districts

Uganda	Rift Valley Fever (RVF)	Ungraded	9/25/2023	1/1/2023	2/4/2024	184	56	14	7.6%
--------	-------------------------	----------	-----------	----------	----------	-----	----	----	------

Since week 1 through week 44 (ending 19 November 2023), about 182 rift valley fever (RVF) cases have been reported including 54 confirmed cases and 13 deaths from Kabale, Rubanda, Mbarara, Isingiro, Bushenyi, Nakaseke, Kazo, Lira and Kakumiro districts. In 2024, only two cases have been reported with one death in Kampala and Nakaseke Districts. As of 16 January 2024, only Nakaseke district is experiencing an active RVF outbreak with one case and zero death reported so far.

Zambia	Anthrax	Grade 2	11/1/2023	10/12/2022	2/4/2024	895	40	4	0.4%
--------	---------	---------	-----------	------------	----------	-----	----	---	------

On 1 December 2023, WHO was notified of a human anthrax outbreak in Zambia. The first cases were recorded in the Sinazongwe district of Southern province in October 2022. Between 12 October 2022 and 4 February 2023, a total of 895 cases and 4 deaths (CFR 0.45%) were reported from nine provinces.

Zambia	Cholera	Grade 3	1/24/2023	1/20/2023	2/18/2024	19.474	329	679	3.5%
--------	---------	---------	-----------	-----------	-----------	--------	-----	-----	------

The current cholera outbreak started with Lusaka Province confirming cases in the cholera-prone areas (peri-urban). From October 2023 to 18 February 2024, nine provinces have reported cases of cholera with seven provinces confirming cholera outbreaks. A total of 40 districts have confirmed local transmission. Cumulative cases stand at 19 474 with 679 deaths (CFR 3.5%).

Zambia	Measles	Ungraded	6/13/2022	6/13/2022	12/18/2023	3.715	367	31	0.8%
--------	---------	----------	-----------	-----------	------------	-------	-----	----	------

Zambia experienced a measles outbreak in the North Western province of the country. This is in a district that borders with DR Congo. A measles outbreak continued to evolve in Lusaka, North-western and Southern provinces affecting several districts. Cumulatively, the provinces had recorded 3 715 measles cases and 31 deaths as of 12 August 2023. As of 18 December 2023, 148 cases of measles were reported in 6 districts (Chitambo, Chiengi, Samfya, Kanchibiya, Ikelenge, Kaputa) with 0 deaths.

Zimbabwe	Anthrax	Grade 2	11/13/2023	11/14/2023	2/12/2024	683		1	0.1%
----------	---------	---------	------------	------------	-----------	-----	--	---	------

As of 12 February 2023, there have been a total of 683 cases reported in Zimbabwe. Eight districts have reported cases since beginning of 2023 with the majority of cases coming from Gokwe North (63.1%) and Gokwe South (33.1%). The confirmed death was reported in 2023, from Gokwe South.

Zimbabwe	Cholera	Grade 3	2/12/2023	2/12/2023	2/25/2024	26.015	2.699	551	2.1%
----------	---------	---------	-----------	-----------	-----------	--------	-------	-----	------

The first cholera outbreak in the country in 2023 started on the 12 February 2023. Cumulatively there were 26 015 cholera cases with 551 deaths (CFR 2.1%) as of 25 February 2024. All of the ten provinces are affected with majority of the cases reported from Manicaland, Harare, Mash West and Mash Cent provinces.

Closed Events

Benin	Dengue fever	Grade 3		1/1/2023	12/20/2023	6	3	1	16.7%
-------	--------------	---------	--	----------	------------	---	---	---	-------

As of 20 December 2023, Benin reported six cases of dengue fever, including three confirmed cases and one death. Confirmed cases were reported from Littoral (n=2) and Couffo (n=1).

Burkina Faso	Dengue	Grade 3	9/11/2023	1/1/2023	2/26/2024	164.848	73.497	746	0.5%
--------------	--------	---------	-----------	----------	-----------	---------	--------	-----	------

From the beginning of the outbreak in January 2023 to 26 February 2024, a total of 164 848 confirmed cases and 746 fatalities have been reported.

Cameroon	Cholera	Grade 3	8/31/2021	10/25/2021	12/3/2023	21.222	2.084	508	2.4%
----------	---------	---------	-----------	------------	-----------	--------	-------	-----	------

The cholera outbreak in Cameroon is improving. Since the beginning of the outbreak till 4 February 2024, a cumulative number of 21 222 cases, including 2 084 confirmed by culture (9.8%) and 508 deaths (CFR.2.4%), has been reported. The median age is 28 years (0.1-103 years) and the M/F ratio is 1.3.

Ghana	Dengue	Grade 3	11/2/2023	1/1/2023	12/19/2023	18	9	1	5.6%
-------	--------	---------	-----------	----------	------------	----	---	---	------

A total of 18 cases of dengue fever including 9 confirmed cases and zero deaths, have been reported in Ghana in 2023.

Togo	Dengue	Grade 3	11/14/2023	11/14/2023	12/31/2023	55	17	1	1.8%
------	--------	---------	------------	------------	------------	----	----	---	------

The Togo Ministry of Health officially notified WHO of cases of dengue fever on 14 November 2023. As of 31 December, 55 cases have been detected, including 17 confirmed by polymerase chain reaction (PCR) testing at the national reference laboratory. Among them, one has died.

†Grading is an internal WHO process, based on the Emergency Response Framework. For further information, please see the Emergency Response Framework: <http://www.who.int/hac/about/erf/en/>.

Data are taken from the most recently available situation reports sent to WHO AFRO. Numbers are subject to change as the situations are dynamic.

© WHO Regional Office for Africa

This is not an official publication of the World Health Organization.

Correspondence on this publication may be directed to:

Dr Etien Luc Koua

Programme Area Manager, Health Emergency Information and Risk Assessment Programme.

WHO Emergency Preparedness and Response

WHO Regional Office for Africa

P O Box. 06 Cité du Djoué, Brazzaville, Congo

Email: afrooutbreak@who.int

Requests for permission to reproduce or translate this publication – whether for sale or for non-commercial distribution – should be sent to the same address.

WCO Contributors

- PALLAWO, Raymond Bernard (Mauritania)
- MINIKULU MPIA, Luigino (Mauritania)
- SAGUTI, Grace (Tanzania)
- COULIBALY, Yahya (Mali)
- ITAMA MAYIKULI, Christian (Mali)

AFRO Contributors

G. Sie Williams
J. Nguna
C. Mildred
D. Gianni-Ferrari
K. Freddy Kavoga
K. Jean-Paul
F. Sarah Dansowaa
R. Mangoza Zaza
G. Akpan
C. Okot

Editorial Advisory Group

Dr Salam Gueye, *Regional Emergency Director*
E. Koua
D. Chamla
F. Braka

Data sources

Data and information is provided by Member States through WHO Country Offices via regular situation reports, teleconferences and email exchanges. Situations are evolving and dynamic therefore numbers stated are subject to change.